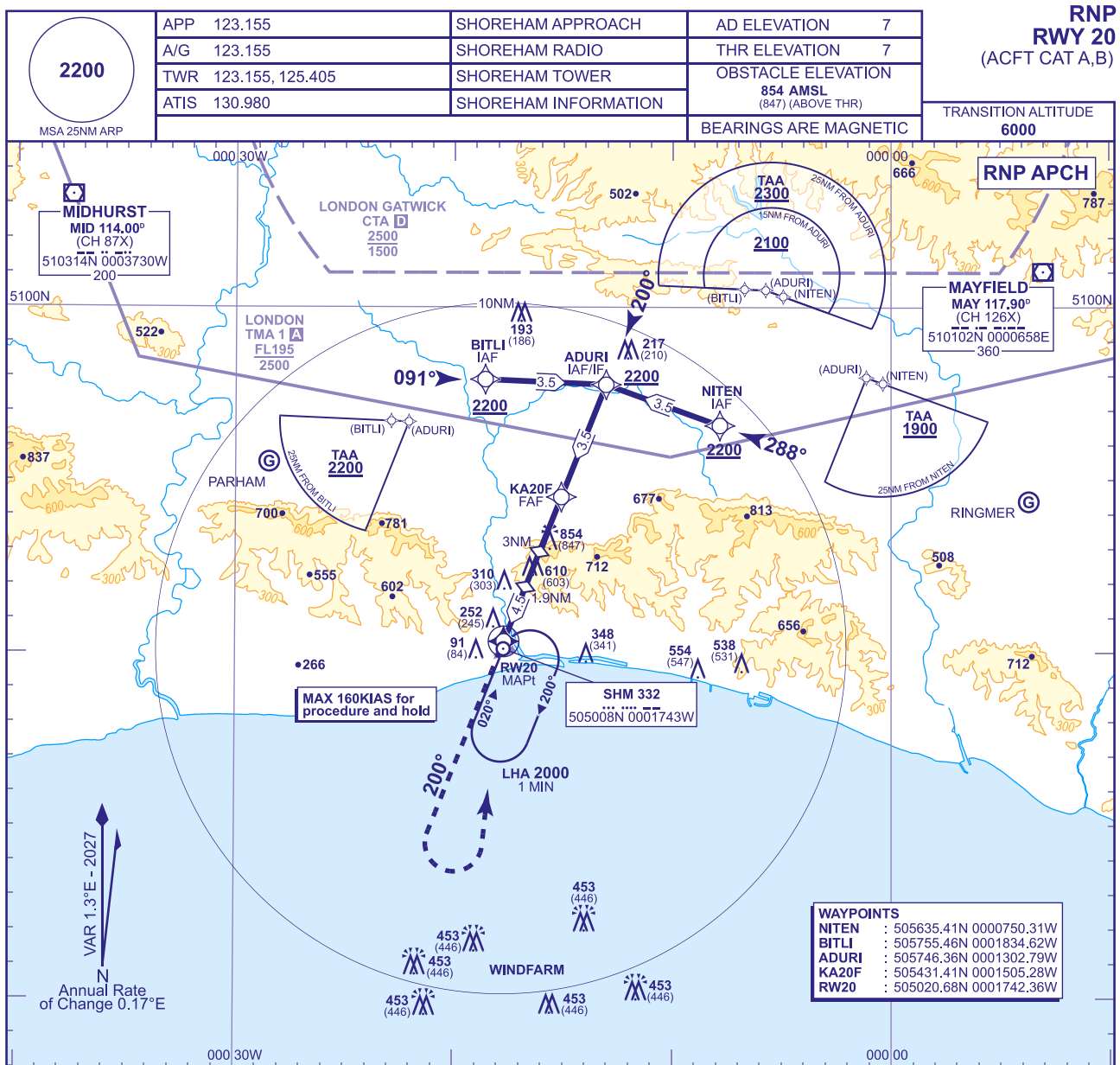


INSTRUMENT APPROACH CHART - ICAO

SHOREHAM
RNP
RWY 20
(ACFT CAT A,B)



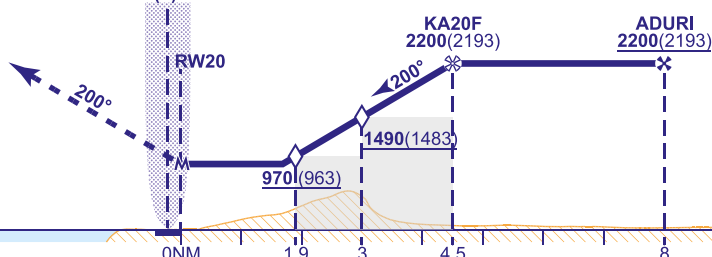
RECOMMENDED PROFILE Gradient 7.84%, 476FT/NM

NM to RW20	4	3 (SDF)	2	1.9 (SDF)
ALT(HGT)	1970(1963)	1490(1483)	1010(1003)	970(963)

NDB(L) SHM

MAPt (LNAV): RW20

Continuous climb to 2200. Initially climb straight ahead to 1500, then climbing turn left direct to NDB(L) SHM at 2200 to enter the hold.



Aircraft Category		A	B	Rate of descent					
OCA (OCH)	LNAV	760(753)	760(753)	G/S KT	160	140	120	100	80
				FT/MIN	1280	1120	960	800	640
VM(C)OCA (OCH AAL)									
Total Area		760(753)	960(953)						
South of RWY 06/24		760(753)	760(753)						

NOTE 1 Steep Final Approach Descent Gradient 4.48° (7.84%), matched to PAPI angle of 4.5°
2 Missed approach procedures uses **conventional navigation aids** and is not available without **NDB(L) SHM**.
3 Direct entry to BITLI and NITEN, aircraft to remain clear of Gatwick CTA.
4 Direct entry to ADURI (IAF/IF) from the north, only available to aircraft in receipt of a CTR/CTA transit from Gatwick ATC.
5 Pilots are advised that this instrument approach procedure is established outside of controlled airspace.

CHANGE (13/25): MAG VAR REVISED. MAG HEADINGS.